



DIRENZA
PROVEN PERFORMANCE

Ford Focus MK4 ST VORTEX Induction Installation Guide

The Direnza Performance VORTEX Intake for the Focus MK4 ST is a high performance, after-market induction kit. Offering increased airflow and performance over the stock arrangement. The extra air capacity provides the engine with more oxygen resulting in power gains and a great induction noise.

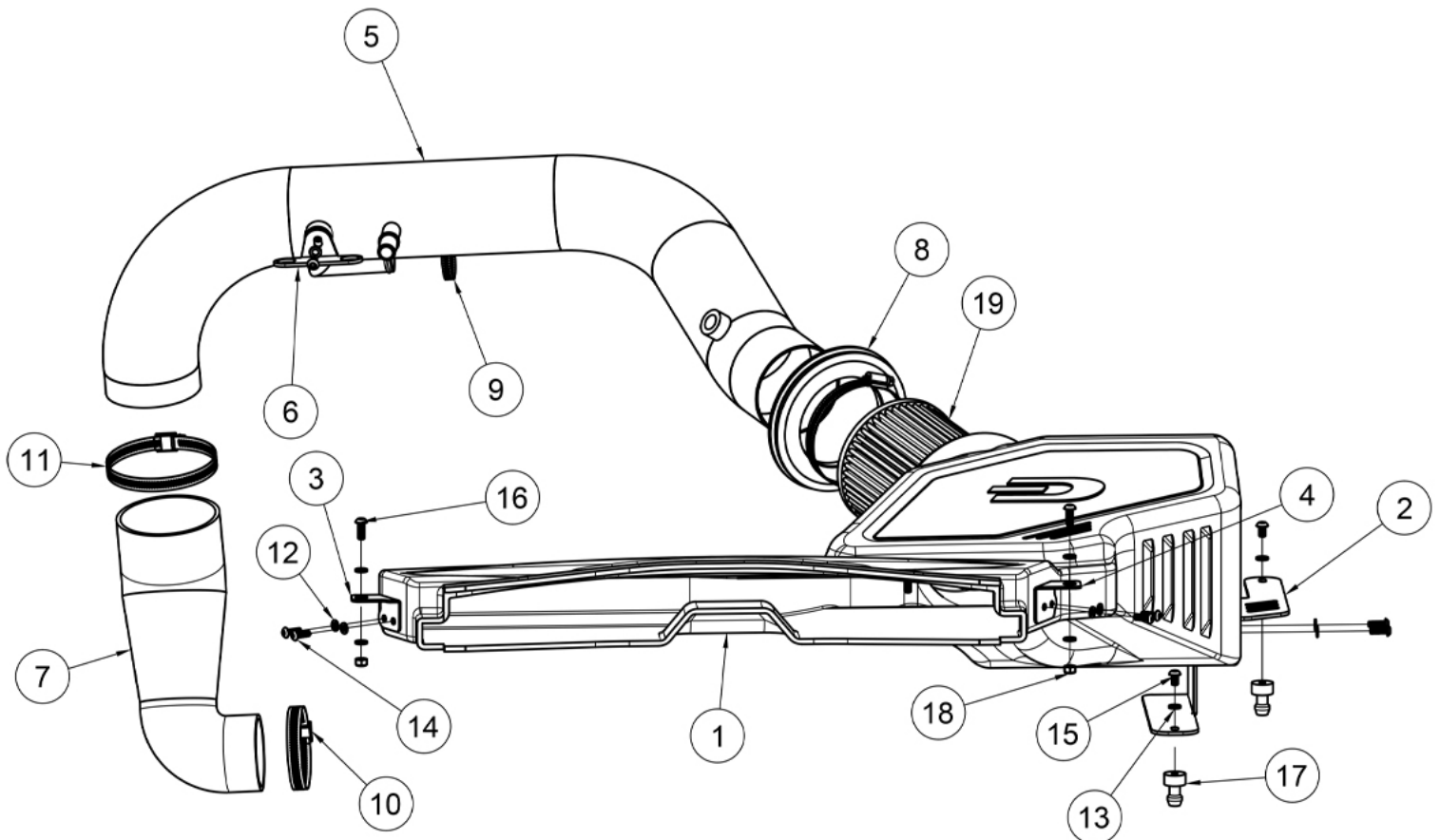
DISCLAIMER

- Allow the vehicle to cool completely prior to installation.
- We recommend that the Air Kit is installed by a professional.
- Direnza is not responsible for any vehicle damage or personal injury due to installation errors, misuse or removal of Direnza products.

TOOLS REQUIRED

- Flathead Screwdriver
- Socket Set
Ratchet & Extensions
- Spring Clips
- Trim Tool

Parts List		
Item	Qty	Description
1	1	Airbox
2	1	Bracket 1
3	1	Bracket 2
4	1	Bracket 3
5	1	Airpipe
6	1	Airpipe Bracket
7	1	Silicone Connector
8	1	PROFLEX 3.5in
9	1	25-38 Jubilee Clamp
10	1	52-76 Jubilee Clamp
11	2	78-101 Jubilee Clamp
12	6	M5 WASHER
13	7	Standard M6 Washer
14	6	M5 x 0.8 x 16mm
15	3	M6 Bolt 10mm
16	3	M6 x 1 x 16mm
17	2	M6 Bobbin
18	2	M6 Nylock Nut
19	1	3.5in Straight Air Filter





1. Open the bonnet.



2. Undo the jubilee clamp on the factory airbox.



3. Twist & remove the temp sensor.



4. Step 3 continued.



5. Remove the 2x push clips on the front section of the OE panel.



6. The airbox can be removed from the airpipe.



7. As you are removing the airbox remember to unclip the temp sensor wire.



8. The airbox and air scoop can now be removed.



9. Remove the nut on the engine cover.



10. Remove the engine cover.



11. Step 10 continued.



12. Press in the clip on the crankcase breather and remove.



13. Step 12 continued.



14. Undo the jubilee clamp on the air pipe just before the turbo elbow pipe.



15. The recirc pipe on the rear of the air pipe also needs removing.



16. Use spring clips to release the clamp.



17. Undo 2x bolts securing the air pipe.



18. The air pipe can now be removed.



19. As you are removing the air pipe, pull the recirc pipe off.



20. Step 19 continued.



21. The turbo elbow pipe can be removed, by undoing the jubilee clamp securing it to the turbo.



22. Step 21 continued.



23. Install the supplied bobbins onto the large, folded bracket and secure using supplied bolts and washers.



24. Step 23 continued.



25. Step 23/24 continued.



26. The remaining 2x brackets can be fitted to both ends of the wide mouth inlet.



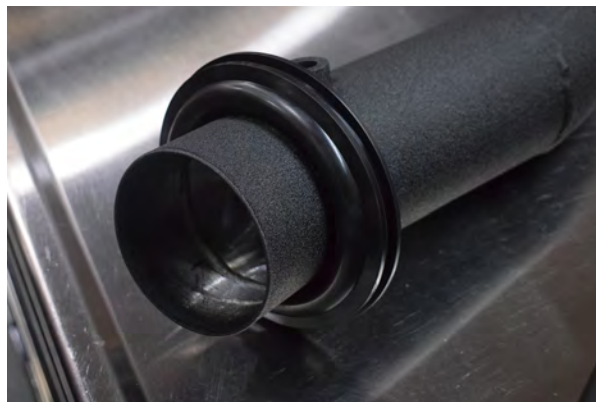
27. Step 26 continued.



28. Again, use supplied bolts and washers for installation.



29. The large bracket with the bobbins can also be installed.



30. Place the Proflex grommet over the intake pipe.



31. Slide the air filter over intake pipe.



32. Secure the filter with the jubilee clamp.



33. Place the jubilee clamps on the silicone turbo elbow.



34. Install the turbo elbow onto the turbo.



35. Secure the silicone to the turbo with the lower jubilee clamp.



36. You can now position the intake pipe in the engine bay feeding it under the fuel line.



37. Place the Vortex box into position, slide the air filter into the box and seal it by pushing the grommet firmly into position.



38. Secure the front of the Vortex box into the slam panel using the factory push clips or the additional nut and bolts supplied with the kit.



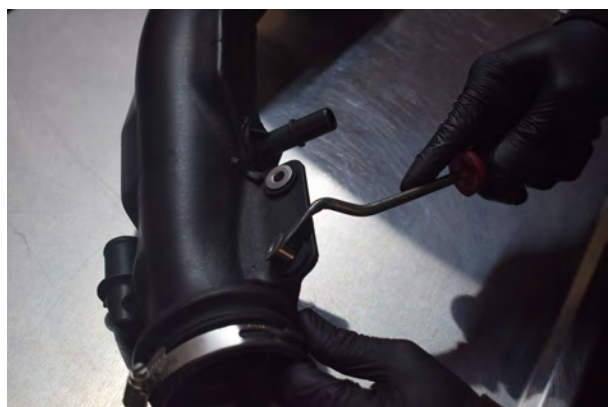
39. Ensure the mounting bobbins are seated correctly.



40. Step 39 continued.



41. The intake pipe can now be inserted into the turbo elbow.



42. Remove the rubber grommets and inserts from the factory intake pipe.



43. Install them onto the Direnza intake bracket.



44. Install the bracket onto the intake pipe.



45. Install the recirc pipe onto the intake pipe.



46. Secure using supplied jubilee clamp.



47. With everything in position, the intake pipe bracket can be tightened using the original bolts.



48. Clip the fuel line back into the mounting bracket.



49. Install the temp sensor.



50. Refit the crank case breather, this will click as it is pushed into position.



51. Tighten the final jubilee securing the turbo elbow to the intake pipe.



52. Your Vortex induction kit is now installed.



You may also like...



Ford Focus MK4 ST 3" GPF Back Exhaust System.



Ford Focus MK4 ST 3" GPF Delete Pipe.



Ford Focus MK4 ST 3.5" Decat Downpipe



Ford Focus 20mm Hubcentric Wheel Spacers

We are always looking to feature your cars on our Social Media. **Tag and follow** us so we can keep the community growing! **@DIRENZAPERFORMANCE**

#DIRENZA #DIRENZAPERFORMANCE

